

**We  
design  
the  
future**



## Contact us

Address: Avenija Dubrovnik 16,  
10020 Zagreb, Croatia

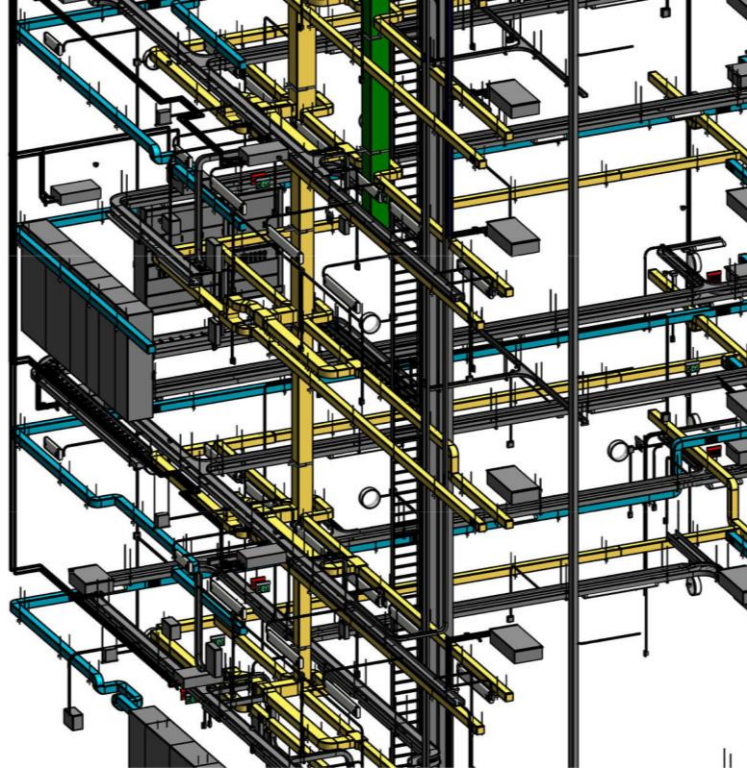
E-mail: [soldatov.dmitriy@globsteeleng.com](mailto:soldatov.dmitriy@globsteeleng.com)

Phone: +385917893846

## GSE

The global design and engineering  
company

Electric and automation



We offer the most effective solutions at the most optimal price

## Areas of work

### Electric and automation

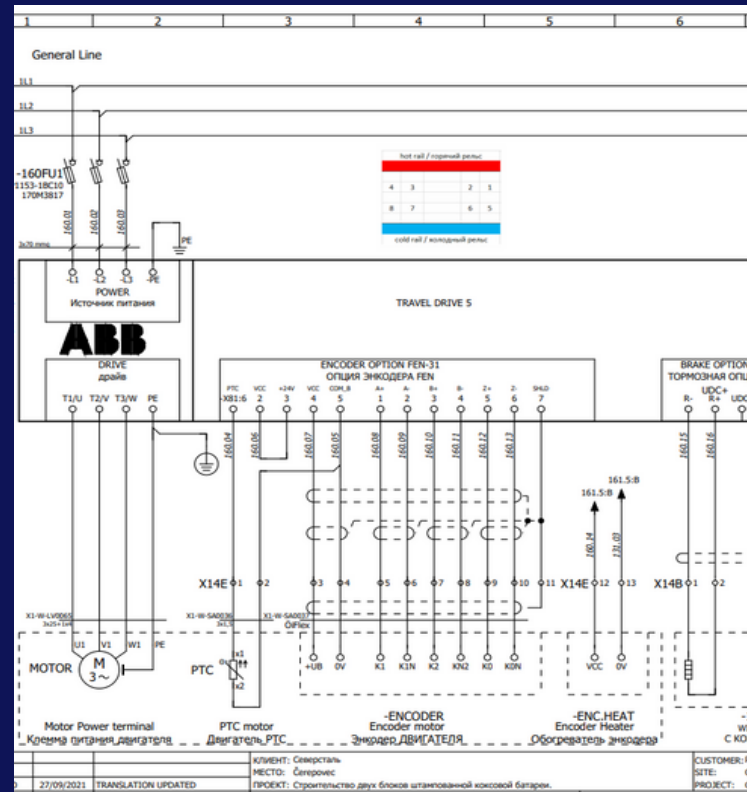
GSE comprehensively develops the electrical part of the project, namely the following sections: Power Supply, Power Distribution, Power Channeling, Process Control, Lighting for Metallurgy Facilities, Mining and Processing Plants, Petrochemical, Oil Processing and Civil Infrastructure.

The development is made using AutoCad, Revit, Eplan and localized software systems of electrical equipment manufacturers.

The work is performed by skilled professionals with solid experience in industrial facilities.

## Who we are

The team of professionals founded in 2011 focused on the full cycle of designing activities related to the construction and reconstruction of the industrial infrastructure objects of all levels of complexity



# PLC programming and commissioning



## Contact us

Address: Avenija Dubrovnik 16,  
10020 Zagreb, Croatia

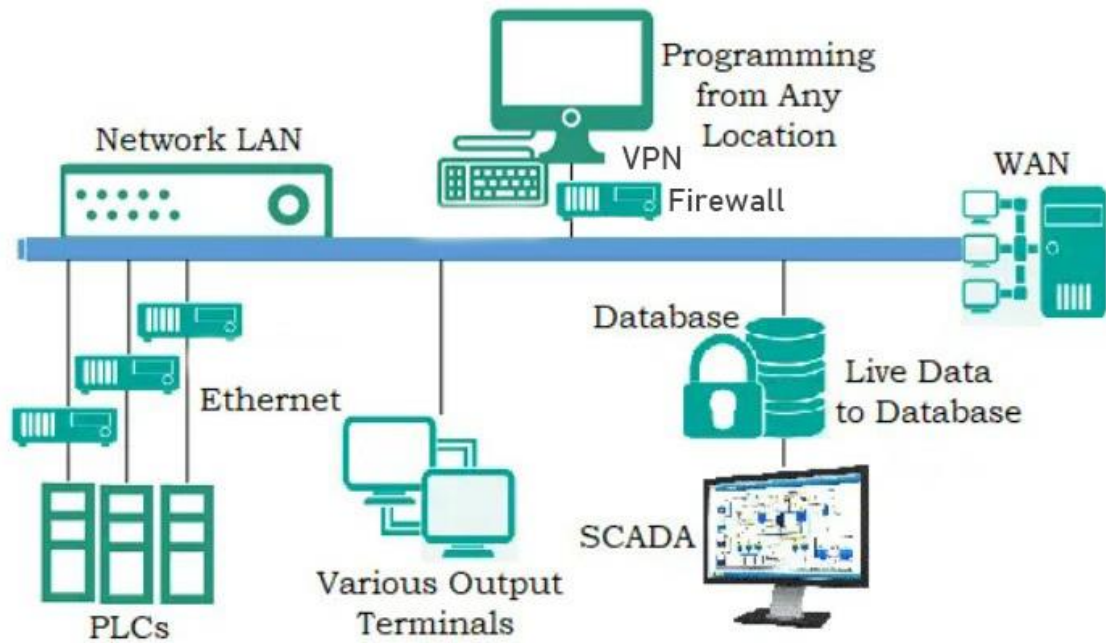
E-mail: [soldatov.dmitriy@globsteeleng.com](mailto:soldatov.dmitriy@globsteeleng.com)

Phone: +385917893846

## GSE

The global design and engineering  
company

PLC programming and  
commissioning



## Areas of work

Our automation and commissioning engineers are highly qualified specialists that have extensive experience in the following fields:

Automotive industry

Mechanical engineering

Woodworking industry

Power engineering

Steel plants

Coke oven

Milk processing and cheese production

Oil Processing Plants

## Platforms:

Siemens: STEP7, WinCC, PCS7, TIA Portal

Lenze, Festa: CodeSys

Servo Drive Lenze: Servo Drive

Wonderware: InTouch

Emerson: DeltaV

Rockwell: Control Studio

Omron: CX-Programmer, CX-Supervisor

SEW Eurodrive: Movi-Tool, Movi-Suite

Bihl Wiedemann: AsiMon360

Schneider Electric: EcoStructure

Control Expert

Instrumentation

